



KIT PART NUMBER VE5860
INSTRUCTIONS FOR INSTALLING REGENERATION UCB IN AP 120 series
MACHINES.

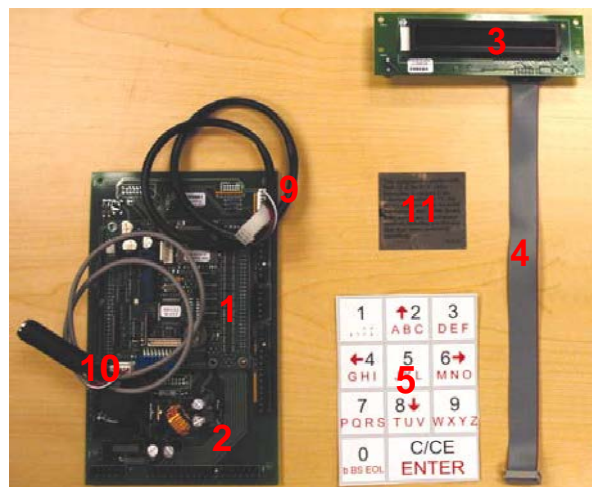
COMPARE THE PARTS RECEIVED IN THIS KIT WITH THE PARTS LIST IN THE INSTRUCTIONS. IF ANY PARTS ARE MISSING CONTACT THE VENDORS EXCHANGE PARTS DEPARTMENT AT 1-800-321-2311 x226.

Read these instructions carefully before installing the kit.
Keep these instructions for part numbers and for future reference.

THIS KIT CONTAINS THE FOLLOWING:

INDEX	PART NUMBER	DESCRIPTION	QTY
1	VE5801	UNIVERSAL CONTROL BOARD	1
2	VE5861	HARNESS BOARD AP120 series	1
3	VE5862	DISPLAY BOARD AP120 series	1
4	VE5853D	Display Harness (Ribbon Cable)(Same as AP6000/7000)	1
5	VE5863	KEYPAD LABEL	1
6	VE7332	#6-32 X 1/4" PHILLIPS MACHINE SCREW (Not Shown)	2
7	VE7363	#4-40 X 3/8" PHILLIPS MACHINE SCREW (Not Shown)	2
8	VE7203	#4-40 HEX NUT (Not Shown)	3
9	VE5816	MDB HARNESS	1
10	VE5817	DEX HARNESS	1
11	VE5819	FCC Label	1

Tools Required:
Phillips Screwdriver or Cordless Screwdriver
11/32" Nut Driver
Pliers
Flashlight



****WARNING****

Electrical Shock Hazard – Turn machine off and disconnect electrical cord from the wall outlet before installing this kit. Failure to do so could result in electrical shock.

1. Read these instructions carefully before installing this kit.
2. Turn the machine OFF with the main switch and unplug the cord from the wall outlet. Failure to do so could result in an electrical shock.
3. Unplug all harnesses from the existing controller PCB. See Figure 1. Also remove the coin mech and validator if present. Save 11/32” Hex Nuts.
4. Remove the control board cover by removing the Phillips screw at the top, right edge of the cover as shown. Discard cover and screw. See Figure 1.

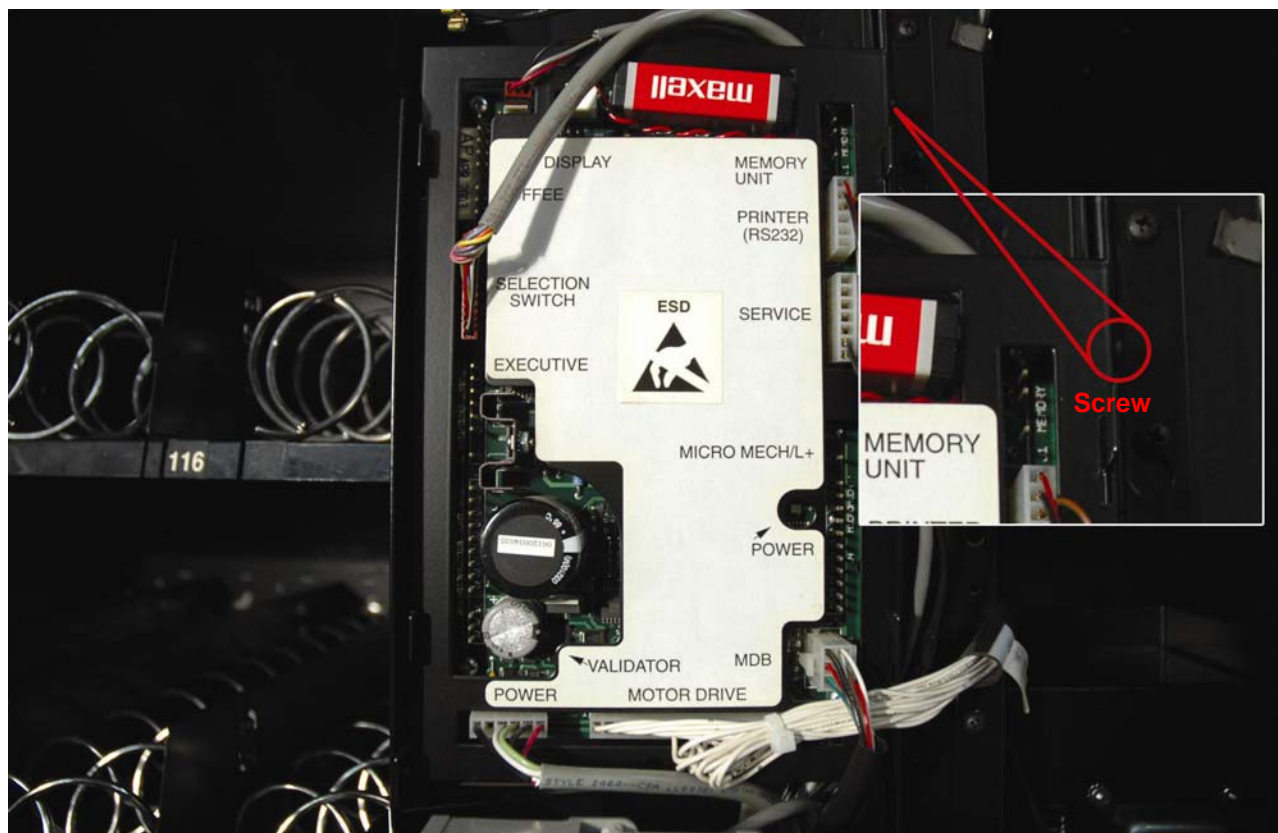


Figure 1

5. Remove the existing controller PCB by removing the 4 – Phillips screws at each corner. Discard the controller PCB. See Figure 2.
6. Install UCB/Harness board assembly (VE5801, VE5861, VE5816, VE5817) using the 4 – Phillips screws from the previous step as shown. See Figure 3.

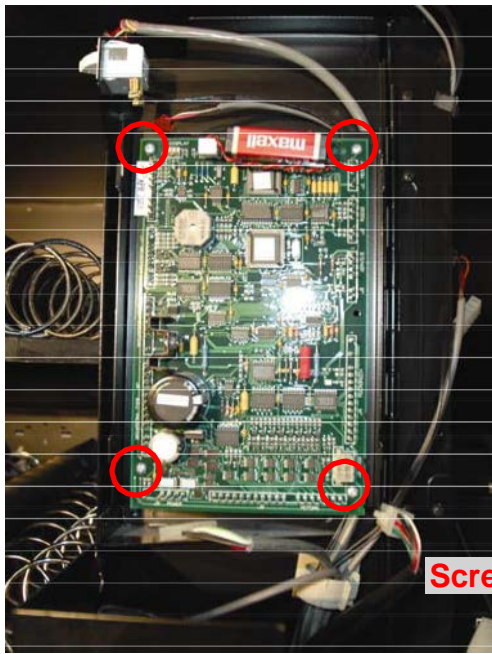


Figure 2

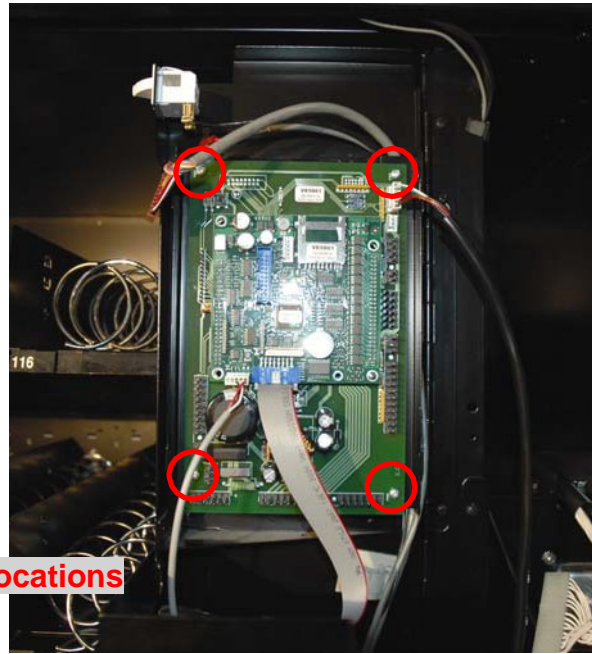


Figure 3

7. Unplug display harness and remove the 4 – Phillips screws holding the display PCB and plastic insulator in place. Save the screws and insulator. See Figure 4.
8. Install new Display PCB (VE5862), Display Harness (VE5853D) and plastic insulator using 4 – Phillips screws from previous step.

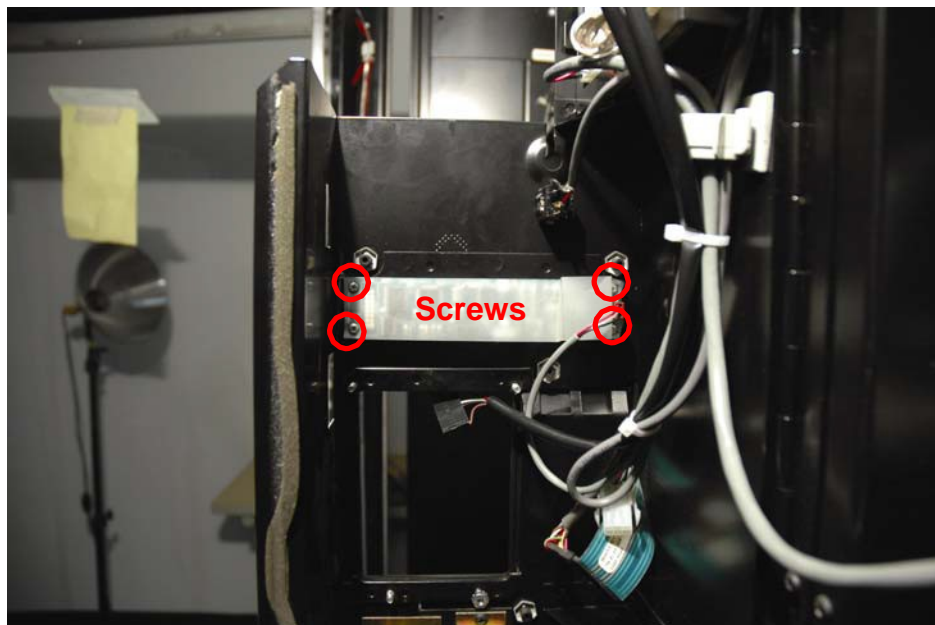


Figure 4

9. Verify that all harnesses are connected to the UCB as shown. See Figure 5.

- 1 VE-supplied drop sensor (if applicable)
- 2 Door switch
- 3 VE-supplied LED lighting (if applicable)
- 4 Display
- 5 Tray
- 6 Power
- 7 DEX
- 8 Keypad
- 9 MDB

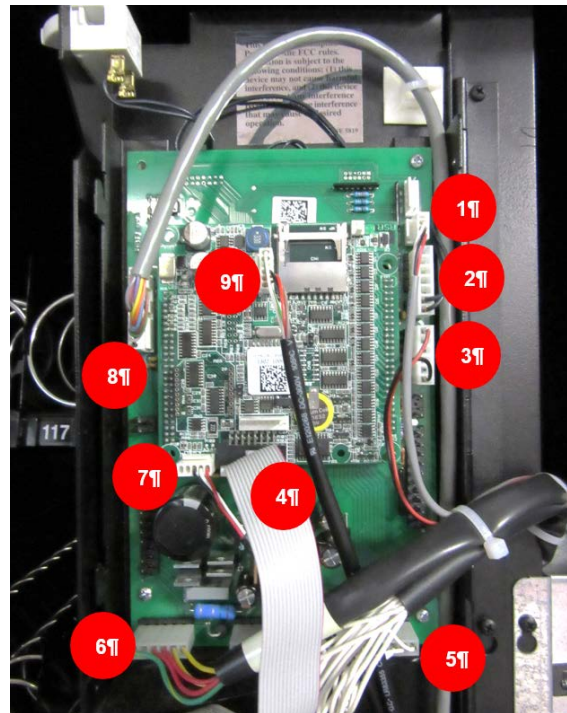


Figure 5

10. Install FCC LABEL (VE5819) near the UCB. See Figure 6.

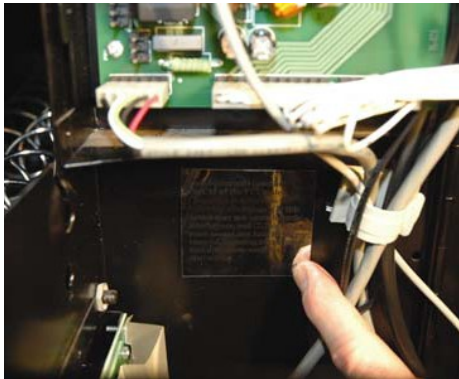


Figure 6



Figure 7



Figure 8

11. Remove and discard the existing DEX harness. See Figure 7.

12. Install KEYPAD label (VE5863) as shown. See Figure 8.

13. Install MDB coin mech and validator.

14. Reconnect the power cord to the outlet and turn on the main power switch.

15. Program the machine by following the steps outlined in the UCB programming guide provided with the kit. The installation is now complete.