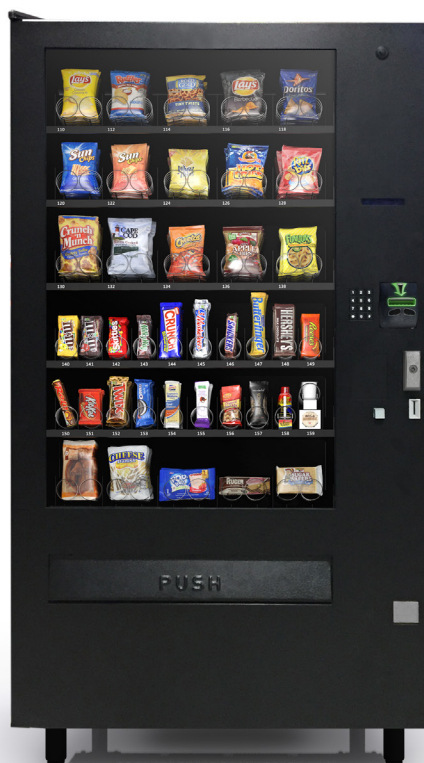


# THE REVISION™ DOOR

---

FOR AMERICAN ROWE 5900, 6800 & 7800

## INSTALLATION MANUAL



8700 BROOKPARK ROAD  
CLEVELAND, OH 44129

800.321.2311  
[WWW.VEII.COM](http://WWW.VEII.COM)

Dear Valued Customer,

Thank you for purchasing the REVISION™ Door. This manual describes how to install the REVISION Door on an American Rowe 5900, 6800, and 7800. If ordered, instructions about installing the drop sensor are included.

Please read all instructions thoroughly before installing the REVISION Door. If you need any assistance, call 1-800-321-2311.

We appreciate your business and thank you again for making Vendors Exchange® International your choice for innovative vending solutions.



**VENDORS  
EXCHANGE**

I N T E R N A T I O N A L

# CONTENTS

Kit Contents .....	2
Tools Required .....	3
Remove Parts & Prepare For Installation .....	4-7
Install REVISION™ Door .....	8-9
Adjust REVISION Door.....	10-12
Connect Power Supply .....	13-16
<i>Rowe 5900</i> .....	13-14
<i>Rowe 6800 and 7800</i> .....	15-16
Complete Final Installation .....	17-18
Test Door & Prepare For Use .....	19
Kit Contents For Drop Sensor (If Purchased) .....	20
Tools Required .....	20
Install Drop Sensor .....	21-24
Appendices.....	25-27
Vendors Exchange® Warranty Information .....	28

## PRECAUTIONARY STATEMENTS

**WARNING**, **CAUTION** and **NOTICE** statements are used in this installation manual to stress important and critical information. The statements, according to the American National Standards Institute (ANSI), are described below.

### **WARNING**

**WARNING** indicates a hazardous situation which, if not avoided, could result in death or serious injury.

### **CAUTION**

**CAUTION** indicates a hazardous situation which, if not avoided, could result in minor or moderate injury.

### **NOTICE**

A **NOTICE** statement is used to address practices not related to physical injury.

# REVISION™ DOOR CONTENTS

## KIT CONTENTS DESCRIPTION

PART NUMBER	DESCRIPTION	QTY
VE1581	Item Tabs	1
VE1963	#8-32 X 1/2" Phillips Pan Head Screw	1
VE4653K	1/2" Black Nylon Cable Clamp	1
VE4849	LED Window Cling-on Sticker	1
VE5800	UCB™ Programming Instructions Guide	1
VE5876	Refund Label Cling-on Sticker	1
VED6322	Anti-Vandal Strip	1
VED4329	#8 X 3/8" Type 25 Slot Hex Washer	3
VE6836	1/4"-20 X 7/8" Flat Head Socket Cap (Hex) Screw	7
VED6301R	Cash Box with Installed Wing Handle Cam Latch (VE6852)	1
VED6327	Bottom Hinge Kit	1
VED6301S	Door Stop Bracket	1
VED6300PS	Power Supply Board	1
VED6315	Dash Pot Holder	1
VE1015043	#8-18 X 3/8" Phillips Pan Head Screw	1
VE5228K	#8 Fender Washer, 3/16" ID X 3/4" OD	1
VE7200K	1/4" Flat Washer	2
VED6310	#10 X 5/8" Hex Screw	2
VE4603K	4" Cable Tie	6
VE6316	Lock Bar Latch	1
VED1015250	Gusset ( <b>5900 Model Only</b> )	1
VE7373K	#8-18 X 1/2" Self-Tap Screw	4
VED7358	1/4"-20 Keps Nut	9
VED6325	5/8" OD Washer	2
VE7207K	#8-32 Keps Nut	1
VE1015226	Installation Manual	1

## TOOLS REQUIRED

- 7/16" Wrench
- 5/32" Hex Wrench
- Phillips Screwdriver
- Flat Head Screwdriver
- 1/4" Nut Driver
- Standard Socket Set
- Flashlight
- Wire/Side Cutter

**NOTE:** Some images are for illustrative purposes only and are not specific to one particular model of the American Rowe.

## REMOVE PARTS & PREPARE FOR INSTALLATION

### **NOTICE**

Test machine for proper operation before proceeding with installation.

### **⚠ WARNING**

To prevent personal injury and equipment damage, turn machine off and disconnect electrical cord from the wall outlet before installing door. Failure to do so could result in electrical shock.

### **⚠ WARNING**

Do not remove trays from cabinet. The cabinet could become unsteady and result in damage or personal injury.

### **⚠ CAUTION**

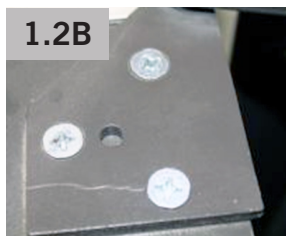
To avoid potential injury, it is highly recommended that installation of the REVISION™ Door is completed with two persons.

## REMOVE PARTS & PREPARE FOR INSTALLATION

- 1.1 Remove monetary side inner wall/glass retainer (left side wall when viewing glass with door open). Then, unfasten two screws on the top and bottom of bucket, and one screw on each side of left and right inner walls holding delivery bucket (**FIG. 1.1**).



- 1.2 Disconnect all factory wiring harnesses from factory power supply. Next, remove door stop arm (**FIG. 1.2A**) and leave other end in cabinet. Then, using Phillips screwdriver and 7/16" wrench, uninstall top hinge (**FIG 1.2B**).



### CAUTION

**To avoid personal injury, make sure that factory door is supported. Then, pull top of door away from cabinet and lift door off bottom hinge.**

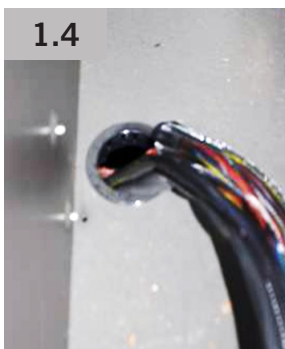
- 1.3 For 5900 model, disconnect main harness from control board and remove harness clips holding it to panel (**FIG. 1.3**). Then, remove control assembly (inner sliding panel) by unfastening screws holding panel to slide inside of cabinet.



**NOTE:** The sliding control unit is no longer required. The actual slide does not need to be removed from the cabinet.

## REMOVE PARTS & PREPARE FOR INSTALLATION

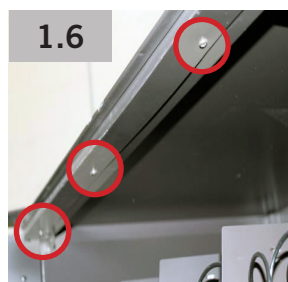
- 1.4 After disconnecting main harness in Step 1.3, pull it through hole and down into bottom of cabinet (**FIG. 1.4**).



- 1.5 Remove factory door switch (**FIG. 1.5**). Bracket does not need to be uninstalled.



- 1.6 Remove OEM anti-vandal strip from cabinet by unfastening three screws (**FIG. 1.6**). For 5900 model, leave corner anti-vandal piece intact. Remove screw that holds top strip.



- 1.7 Install offset anti-vandal strip (kit item) in same location using three OEM screws with offset downward and facing front of machine as shown in **FIG. 1.7**.





## REMOVE PARTS & PREPARE FOR INSTALLATION

- 1.8 Using 5/32" hex wrench, install bottom hinge (kit item) on REVISION™ Door using 4-1/4" X 20 flat head socket screws, 1/4" flat washer, and 1/4" X 20 Keps nuts (kit items) as shown in **FIG. 1.8**. Ensure that side of hinge is parallel to side of door.

**NOTE:** The bracket for the door stop arm will be installed over the two studs in Step 2.4.



- 1.9 Replace bottom cabinet hinge using OEM bolts. When tightening, ensure that hinge is perpendicular to cabinet as it can pivot left and right.

## INSTALL REVISION™ DOOR

- 2.1 Align two brass washers (kit item) over hole on cabinet hinge. Then, insert pin on door hinge into cabinet hinge (**FIG. 2.1**).

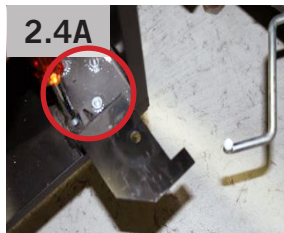


- 2.2 Support REVISION Door so holes on top align with top hinge holes. Using 5/32" hex wrench, install remaining three 1/4" X 20 flat head socket screws into holes with remaining washers and Keps nuts (kit items) to hold door in place (**FIG. 2.2**).



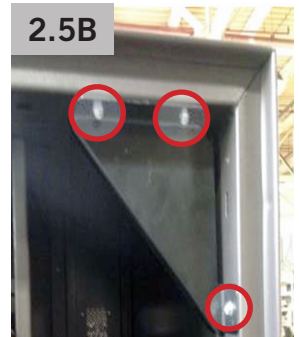
- 2.3 Ensure that side of hinge is parallel to side of door as shown in **FIG. 2.3**.

- 2.4 Install door stop bracket at bottom (hinge side) on studs with two 1/4" X 20 Keps nuts (kit item) as shown in **FIG. 2.4A**. Do not tighten bolts. Then, connect door stop arm to hole in bracket with factory cotter pin (**FIG. 2.4B**).



## INSTALL REVISION™ DOOR

- 2.5 For 5900 models only, if no gusset is present at top right corner (**FIG. 2.5A**), align front lip of gusset (kit item) with front of cabinet and then install gusset as shown in **FIG. 2.5B**.



- 2.6 Remove existing OEM lock bar latch from cabinet (**FIG. 2.6**).



# ADJUST REVISION™ DOOR

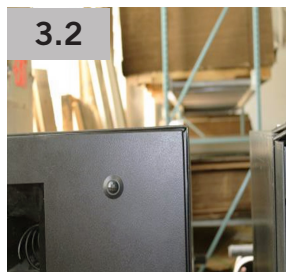
## NOTICE

**During installation, the door may require adjustment or alignment for a proper fit. When closing door do not force or slam shut. This may cause damage to the door frame or lock bar.**

3.1 Ensure that cabinet is on level floor and that cabinet itself is level.

3.2 If spacing issue is between top of door and right top corner of cabinet, loosen bottom hinge on cabinet and shift hinge to the right. Retighten hinge after best possible gap is identified (**FIG. 3.2**).

**NOTE:** The bottom hinge will move to both the left and right so the best possible gap can be obtained all the way around the cabinet.



3.3 If door is not flush against right side of cabinet, adjust door by loosening four bolts that hold bottom part of hinge to door. To correct gap at top of door, move door forward (away from cabinet) on hinge; to correct gap at bottom, move door backward (toward cabinet) on hinge.

**NOTE:** It may not be possible to eliminate the entire gap. Determine the best possible balance between the top and bottom gap.

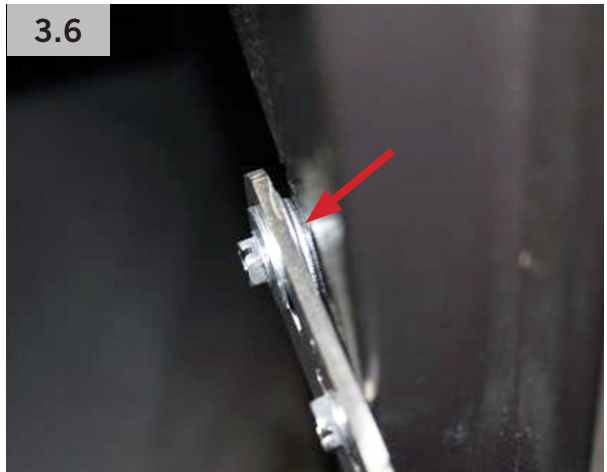
3.4 After door spacing is complete, install top lock bar latch (kit item) using larger fender washer (kit item) on rear screw (**FIG. 3.4**), making sure that latch is perpendicular to cabinet. Note that new hook is designed to pivot up and down for increased adjustability.



## ADJUST REVISION™ DOOR

- 3.5 If door does not close or hook rubs when closing, note affected location. Rotate hook up or down if hook is striking top or bottom of lock bar opening by loosening two screws that secure hook to cabinet, and adjust as needed until latch no longer hits.

- 3.6 If hook is striking left or right side of lock bar opening, install one washer (maximum two) provided with lock bar latch, between cabinet and hook on front screw to move hook to left; install one washer (maximum two) between cabinet and back screw to move hook to right (**FIG. 3.6**).



- 3.7 To make final adjustments, close door and twist T-handle. If lock bar strikes hook, loosen screws on hook and move it in or out based on where lock bar is hitting. Continue making small adjustments until T-handle closes completely (Door can be locked and little or no play exists in door).
- 3.8 Repeat steps 3.4 through 3.7 for bottom latch. Then, close door to check alignment one final time. Repeat steps in this section to correct any outstanding issues.

## ADJUST REVISION™ DOOR

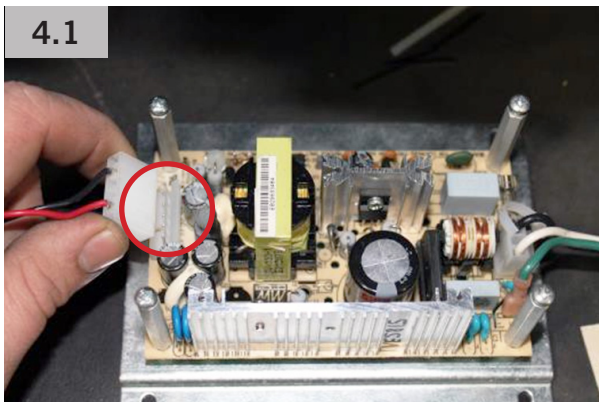
- 3.9 To set inner wall depth, loosen five nuts on depth adapter and extend out entirely (**FIG. 3.9**).
- 3.10 Carefully and slowly close door and latch.
- 3.11 Unlatch door and open slowly.
- 3.12 Tighten all nuts on adapter, starting from middle and moving outward. If adapter moves at all during tightening, repeat process beginning with Step 3.9.
- 3.13 Close door and lock it. Ensure that door closes properly. If door is harder to close than previously, repeat steps 3.9 through 3.12 to reset adapter depth.



## CONNECT POWER SUPPLY - 5900 MODEL

**NOTE:** Steps 4.1 through 4.9 describe how to install power supply and connect harnesses for the 5900 model.

- 4.1 Remove cover from power supply (kit item) and plug five-prong plug from REVISION™ Door harness into open outlet on power supply (**FIG. 4.1**).



- 4.2 Reinstall power supply cover as shown in **FIG. 4.2**.



- 4.3 Place new power supply in bottom of cabinet to right of OEM power supply as shown in **FIG. 4.3**.



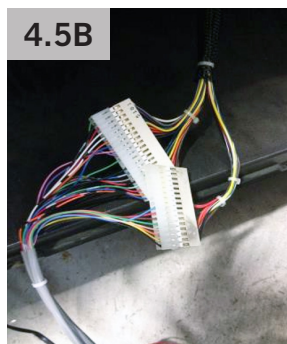
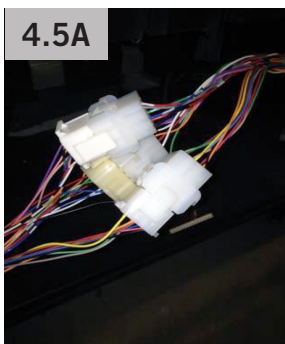
- 4.4 Connect new power supply to OEM power supply as shown in **FIG. 4.4**.



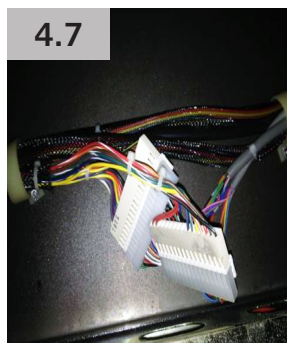
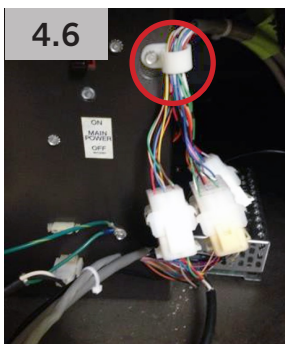


## CONNECT POWER SUPPLY - 5900 MODEL

- 4.5 Plug adapter harness into door harness (**FIG. 4.5A**). Each plug is designed to fit in its corresponding plug on door harness. Then, plug door wiring harness with adapter harness attached, into cabinet harness (**FIG. 4.5B**).

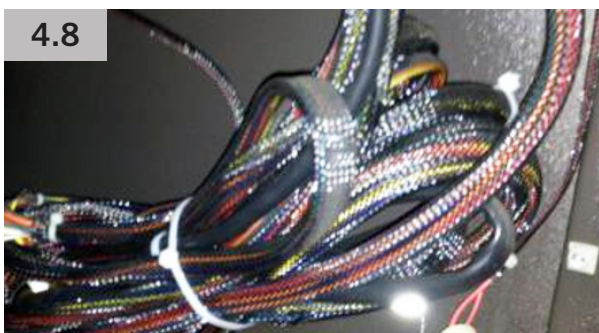


- 4.6 Using "P" clip supplied with REVISION™ Door, secure cable bundle in **FIG. 4.5A** to power supply box (**FIG. 4.6**).

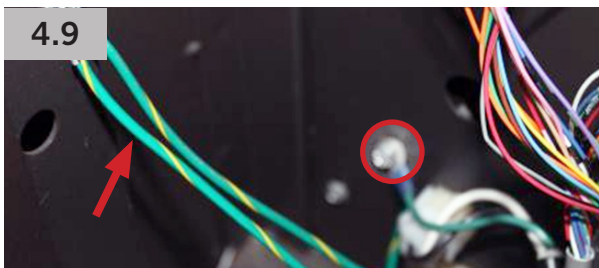


- 4.7 Route remaining cable in factory cable clips behind gum tray (**FIG. 4.7**).

- 4.8 Use cable ties to secure harness bundle to right side of cabinet (**FIG. 4.8**).



- 4.9 Connect ground outlets as shown in **FIG. 4.9** with OEM screws from cabinet.

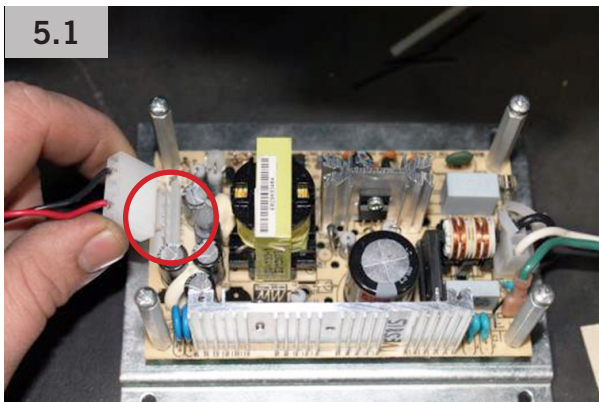




# CONNECT POWER SUPPLY - 6800 / 7800 MODELS

**NOTE:** Steps 5.1 through 5.6 describe how to install power supply and connect harnesses for the 6800 and 7800 models.

- 5.1 Remove cover from power supply (kit item) and plug five-prong plug from REVISION™ Door harness into open outlet on power supply (**FIG. 5.1**).



- 5.2 Reinstall power supply cover as shown in **FIG. 5.2**.



- 5.3 Position new power supply in bottom of cabinet to right of OEM power supply as shown in **FIG. 5.3**.



- 5.4 Connect new power supply to OEM power supply as shown in **FIG. 5.4**.

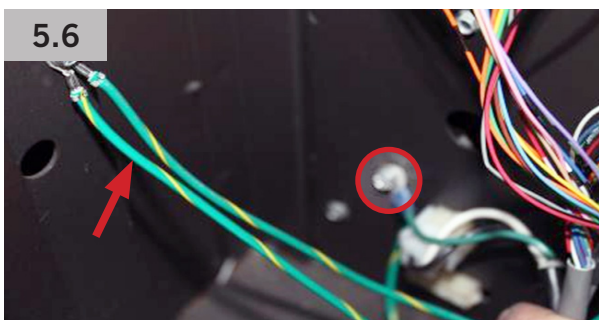


## CONNECT POWER SUPPLY - 6800 / 7800 MODELS

- 5.5 Plug new door wiring harness into outlets on front of OEM power supply (**FIG. 5.5**). Each plug is designed to fit in its own outlet.



- 5.6 Connect ground outlets as shown in **FIG. 5.6** with OEM screws from cabinet.



## COMPLETE FINAL INSTALLATION

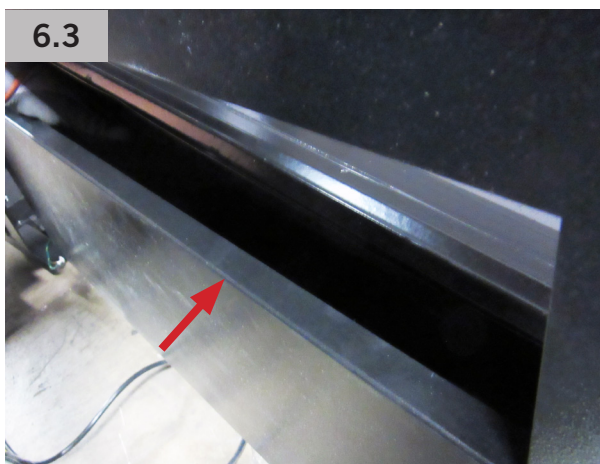
- 6.1 Using 11/32" nut driver, remove filler plate on bottom of inner wall to allow for easier delivery bucket installation (**FIG. 6.1**).



- 6.2 Facing front of REVISION™ Door, position and center delivery bucket in opening. Reach through opening in door. Push bucket delivery flap inward, lift delivery bucket up, and pull toward opening in door (**FIG. 6.2**).



- 6.3 Place delivery bucket lip on bottom edge of opening (**FIG. 6.3**).



## COMPLETE FINAL INSTALLATION

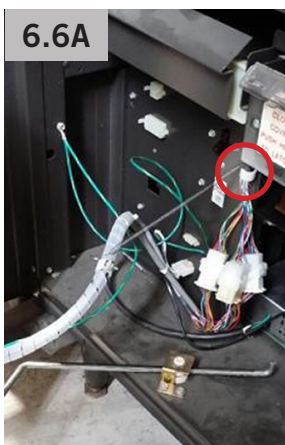
- 6.4 Using 1/4" socket, install two self-tapping screws (kit item) on brackets at top left and right side of delivery bucket (**FIG. 7.4A**) and at bottom left and right side of delivery bucket (**FIG. 7.4B**).



- 6.5 Using Keps nut (kit item) and Phillips pan head screw (kit item), reinstall filler plate (**FIG. 6.5**) that was removed in Step 6.1.



- 6.6 Attach spring and “P” clip to wiring harness with nut (kit item) and bolt (kit item) to keep harness out of door jams. **FIG. 6.6A** shows completed setup for 5900 and **FIG. 6.6B** shows completed setup for 6800 and 7800 models.



### CAUTION

Inspect all electrical connections, making sure they are properly attached to their connection points.

## TEST DOOR AND PREPARE FOR USE

- 7.1 Plug machine power into outlet and confirm that Ground Fault Circuit Interrupter (GFCI) is not in reset mode.
- 7.2 Turn on machine power.
- 7.3 Configure UCB™ following programming instructions guide (kit item).
- 7.4 Test all motors for proper operation.

## KIT CONTENTS FOR DROP SENSOR *(IF PURCHASED)*

### DROP SENSOR INSTALLATION KIT FOR AMERICAN ROWE

PART NUMBER	DESCRIPTION	QTY
VED6332	Drop Sensor Assembly (Bracket and Board)	1
VE1015252	Drop Sensor Mounting Template	1
VE9308A	Magnet	1
VE4650K	4-Way Tie Mount	8
VE4601K	6" Bar Lock Cable Tie	8
VE4679	1/8" Cable Clamp	1
VE7207K	#8-32 Keps Nut	1
VE7253K	1/4" Sheet Metal Screw	1
	Reflective Tape 1-1/2" X 6"	1
	Reflective Tape 1" X 3"	1

### TOOLS REQUIRED

- Phillips Screwdriver
- 1/4" Nut Driver
- 11/32" Nut Driver
- Standard Socket Set
- Wire/Side Cutter

### QUESTIONS?

Contact the Vendors Exchange®  
Customer Service Team  
at **800.321.2311**

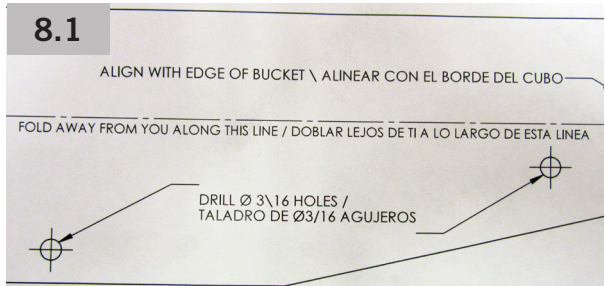


# INSTALL DROP SENSOR

## ⚠ WARNING

To prevent personal injury and equipment damage, turn machine off and disconnect electrical cord from the wall outlet before installing drop sensor. Failure to do so could result in electrical shock.

- 8.1 Cut out drop sensor mounting template (kit item) as shown in **FIG. 8.1**.

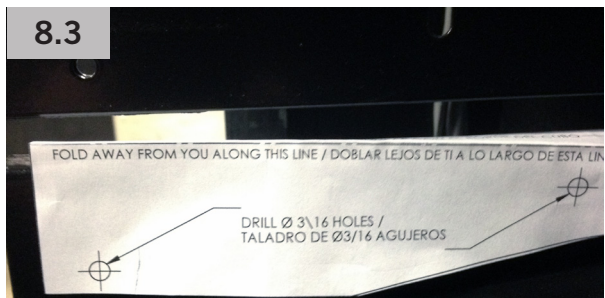


- 8.2 If already installed, remove inner wall bottom flange (**FIG. 8.2**). Save flange for later reinstallation.



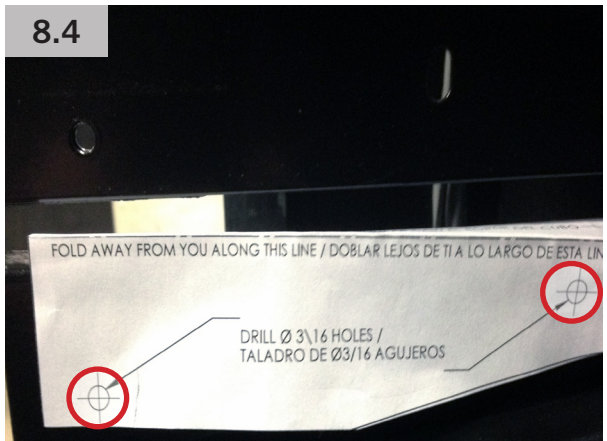
**NOTE:** It is highly recommended to use tape when mounting the template to the drop sensor mounting bracket. If tape is unavailable, hold template firmly in place and have another person mark the template and bracket.

- 8.3 Fold template at dotted line and place on drop sensor mounting bracket (hinge side of door). Follow alignment instructions on template (**FIG. 8.3**).



## INSTALL DROP SENSOR

- 8.4 Using a spring punch or other marking device, place mark through template and onto bracket in two places where holes will be drilled in Step 8.5 (**FIG. 8.4**).



- 8.5 Using 3/16" drill bit, drill two holes on drop sensor mounting bracket in two locations from marks in Step 8.4 (**FIG. 8.5**).



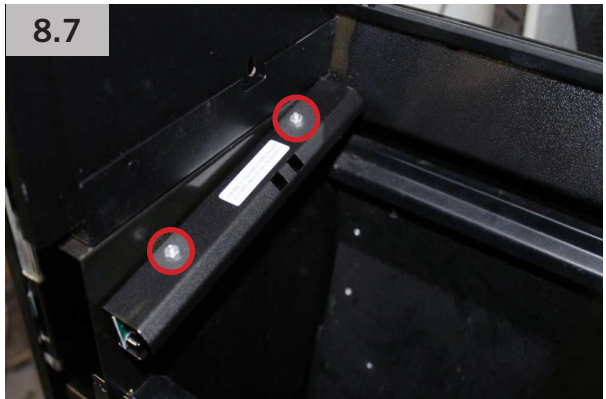
- 8.6 Insert drop sensor into newly drilled holes as shown in **FIG. 8.6**. Then, using 11/32" nut driver, tighten drop sensor to bracket with Keps nut (kit item).



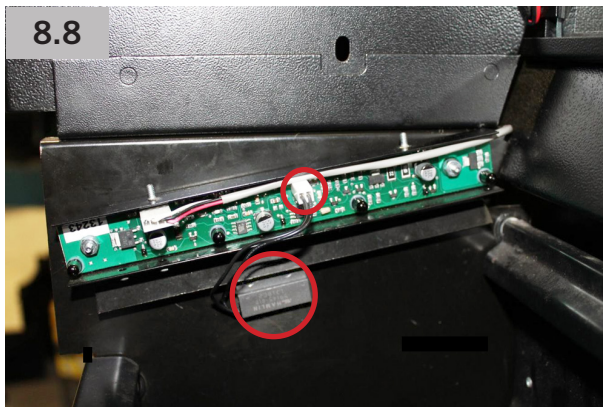


## INSTALL DROP SENSOR

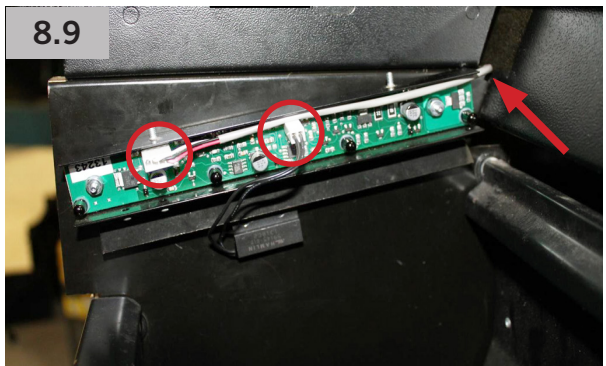
- 8.7 Reinstall inner wall bottom flange. Then, unfasten top plate on drop sensor (kit item) by removing 1/4" nuts and lifting off plate (**FIG. 8.7**). Set two nuts aside.



- 8.8 Position magnet switch against small deflector with back edge of switch in line with second sensor eye. Then, connect magnet switch on two-pin plug (**FIG. 8.8**). Do not remove backing on two-sided tape until ready to permanently mount.

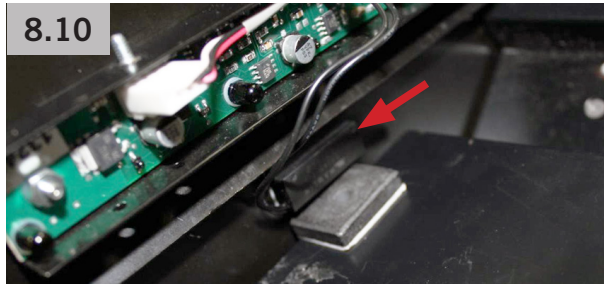


- 8.9 Route 4-pin harness on REVISION™ Door into small opening behind inner wall bottom flange as shown by arrow. Then, connect 4-pin plug on board and tuck wire in on top above 2-pin plug (**FIG. 8.9**).



## INSTALL DROP SENSOR

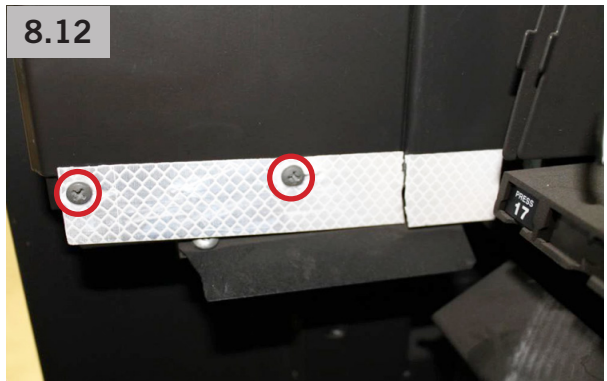
- 8.10 Open delivery bucket and position magnet (kit item) directly under magnet switch that was installed earlier with two-sided tape intact (**FIG. 8.10**).



- 8.11 Move delivery bucket up and down. Green light (LED) on sensor board should illuminate when door is open and turn off when door is closing. Adjust magnet to achieve desired result. When proper placement is identified, remove backing on two-sided tape and apply firmly to delivery bucket door. Refer to **FIG. 8.10**.

**NOTE:** When installing reflective tape, position tape as close as possible to front of cabinet wall.

- 8.12 Unfasten two screws holding deflector. Install reflective tape (kit item) on opposite side of delivery bucket on cabinet wall over holes from removed screws. Then, punch screws through reflective tape and reinstall screws holding deflector (**FIG. 8.12**).



- 8.13 Apply reflective tape on top of delivery bucket extension and trim excess (**FIG. 8.13**).

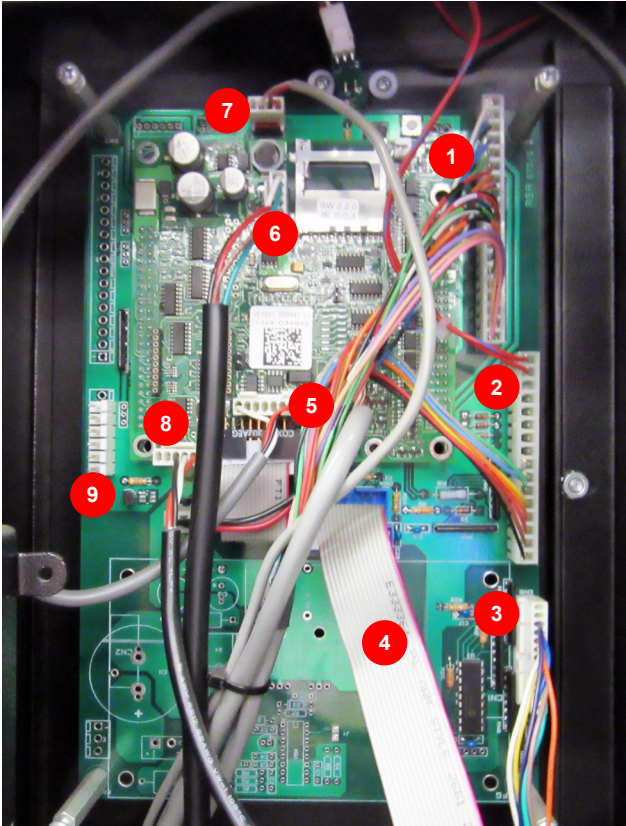


- 8.14 Reinstall top plate on sensor bracket and use cable ties (kit item) to secure loose wires behind inner wall (**FIG. 8.14**).



## APPENDIX

### UCB™ CONNECTIONS FOR AMERICAN ROWE



REFERENCE #	DESCRIPTION
1	Motors/Cabinet
2	Motors/Cabinet
3	Keypad
4	Display
5	Motion Sensor
6	MDB
7	VE-Supplied Drop Sensor
8	DEX
9	VE-Supplied LED Lighting

# APPENDIX

## SERVICE PARTS

### DOOR

PART NUMBER	DESCRIPTION
VE1529A	Door Switch
VED6301N	Lock Bar
VE6816R1	Keypad
VE8715A	Coin Chute
VE3852C	Coin Return Button Assembly

### SPIRALS

PART NUMBER	DESCRIPTION
VE1317	Spiral, 6 CT Snack RH (5900 model)

### MOTORS

PART NUMBER	DESCRIPTION
VE694A	Vend Motor (5900 model)
RCM5931847	Motor Shelf (6800 and 7800 models)

### GLASS

PART NUMBER	DESCRIPTION
VE131M	Glass, 43.25 X 27.50 X .12 Tempered

# APPENDIX

## SERVICE PARTS

### DROP SENSOR

PART NUMBER	DESCRIPTION
VED6332	Sensor Board and Mounting Bracket
VED6333	Drop Sensor Harness
VE9300RTR	Reflective Tape (specify size)

### LABELS

PART NUMBER	DESCRIPTION
VE1581	Item Tabs #110-189
VE704	Selection Label Sheet (5900 model)
VE5876	Refund Label (drop sensor label)

### LED

PART NUMBER	DESCRIPTION
VEL1410RD	LED Light Bar Kit (3 LEDs)
VEL1410	LED Light Bar (1 LED)
VE5829C	LED Motion Sensor

### UCB™

PART NUMBER	DESCRIPTION
VE5801	Universal Control Board
VE5816	MDB Harness
VE5853D	Display Harness
VED6328	Harness Board Forced
VE5862	Display Board
VE6820	DEX Harness

# VENDORS EXCHANGE® WARRANTY INFORMATION

Limited Warranty and Disclaimer. VE warrants that the Products, including without limitation, their component Part(s), sold will be of the kind and quality described herein and will be free of defects in workmanship or material. This Warranty shall extend for the Warranty Period set forth below following the date of delivery of such Products to Buyer. **VE MAKES NO WARRANTY, EXPRESS, IMPLIED (INCLUDING BUT NOT LIMITED TO WARRANTIES OF MERCHANTABILITY AND FITNESS FOR INTENDED PURPOSES), OR STATUTORY, OTHER THAN THE FOREGOING EXPRESS WARRANTY.**

PRODUCT	WARRANTY PERIOD
<b>A. REPLACEMENT PARTS</b>	
New Replacement Parts	90 DAYS
UCB™ Kits	1 YEAR
Rowe Bill Changer Kits	1 YEAR
CleanLife® LED Bulbs	MANUFACTURER
New MEI/CPI Mechs and Validators	2 YEARS
Reconditioned Mechs and Validators	6 MONTHS
Reconditioned Control Boards	6 MONTHS
<b>B. REPAIR SERVICES</b>	
Standard Warranty	1 YEAR
Flat Rate Repairs	1 YEAR
<b>C. EQUIPMENT</b>	
REVISION™ Door	1 YEAR
A-1 Remanufactured Machine	90 DAYS
Clean, Checked and Working Machine	30 DAYS
As-Is Machine	NO WARRANTY
New	MFG WARRANTY

a.) Failure of the Buyer to submit any claim hereunder within ten (10) days following expiration of the Warranty Period applicable to such Products shall be an admission by the Buyer and conclusive proof that such articles are in every respect as warranted and shall release VE from any and all claims for damage of loss sustained by the Buyer. In the event the Buyer timely submits a claim for breach of WARRANTY, the parties agree that, at VE's option, the Buyer's sole and exclusive remedies shall be the repair or replacement of the defective Products or Part(s) or a refund of the price of the defective Products or Part(s).

b.) The Buyer acknowledges that it alone has determined that the Products purchased hereunder shall suitably meet the requirements of its intended function. It is expressly understood that any technical advice or recommended operating practices furnished by VE with respect to the use of the Products is given without charge, and VE assumes no obligation or liability for the advice or recommended operating practices given, or results obtained, all such advice or recommended operating practices being given and accepted at the Buyer's risk.

c.) This Warranty does not apply to (i) electrical components, wiring, circuits and/or mechanical parts or assemblies damaged as a result of operating the Products at other than 115 volts, 60 Hertz current, (ii) Products damaged due to vandalism, fire, flood or other casualty, (iii) Products not maintained in accordance with the manufacturer's or VE's recommendations, and/or (iv) Products not serviced by VE authorized service personnel or which contain replacement parts not furnished by VE or its authorized service personnel.

*For additional information please review the Terms and Conditions of Sale.*

## NOTES

[illegible]



# VENDORS EXCHANGE

I N T E R N A T I O N A L

At Vendors Exchange®, our mission is to link timeless traditions with the latest innovations. From classics to concepts, old parts to new partnerships, we pride ourselves as the only vending solution you'll ever need.