



VENDORS EXCHANGE
INTERNATIONAL
Innovation obsessed. Vending driven.

Installation of “The MIND” Universal Kit

Important Note: Please read all instructions thoroughly before continuing with installation of kit. If you are having problems installing the kit, please call 1-800-321-2311 X226

Tools Required
Phillips Screwdriver or Cordless Screwdriver
Drill
5/16" Drill Bit
1/2" Drill Bit
Pliers
Adjustable/Crescent Wrench
11/32" Nut Drive
Masking Tape
Hack Saw
Scissors
Flashlight

WARNING: Prior to installation, turn the power off to the vending machine and unplug it from its power source

- 1) Use supplied drill template to locate an area for installation. Drill the four mounting holes and also the 2 holes for the ribbon cable slot. (Figure 1)

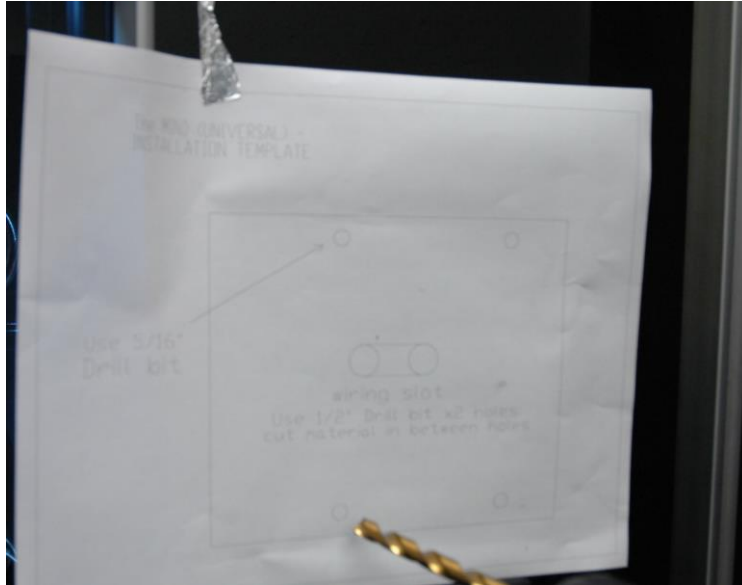


Figure 1

- 2) Use a hack saw to cut in between the two slot holes to create oval hole for ribbon cable.
- 3) Position LCD screen on outside of door and the driver board on the inside of the door, sliding the ribbon cable thru the slot as shown in Figure 2.



Figure 2.

4) Attach ribbon cable to the LCD screen with blue side up (Figure 3)
(shown also is the incorrect method of ribbon cable attachment-Figure 4)

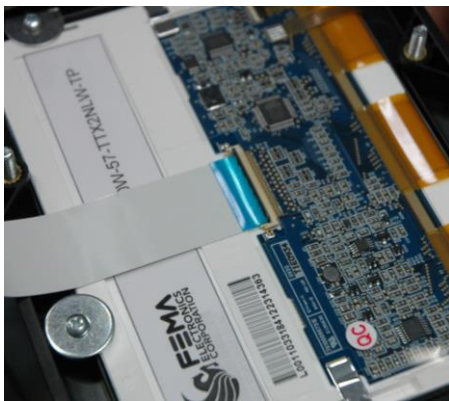


Figure 3.



Figure 4.

4) Close ribbon cable connector to hold ribbon cable in place.

5) Hand-tighten all four nuts on LCD screen as shown in Figure 5

PLEASE NOTE: BE CAREFUL NOT TO OVERTIGHTEN NUTS



Figure 5.

6) Attach Velcro to back of door, and connect this to Velcro piece on cover of board to be positioned as shown in Figure 6.

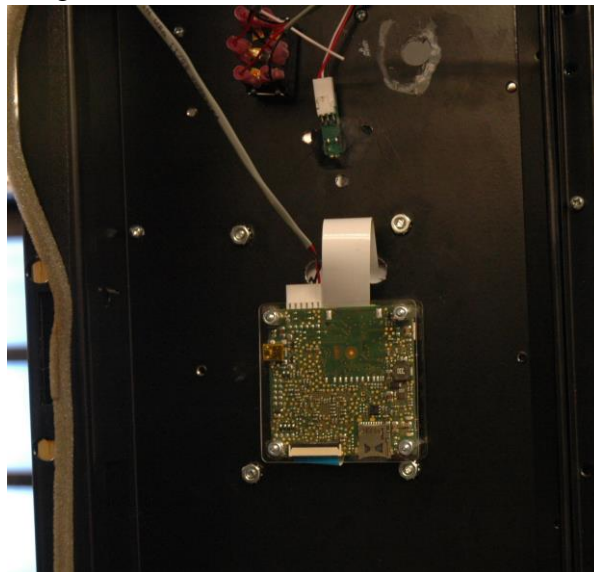


Figure 6.

7) Insert power cord (shown in Figure 7) female piece into display board male piece (shown in Figure 8).



Figure 7. Power Cord.

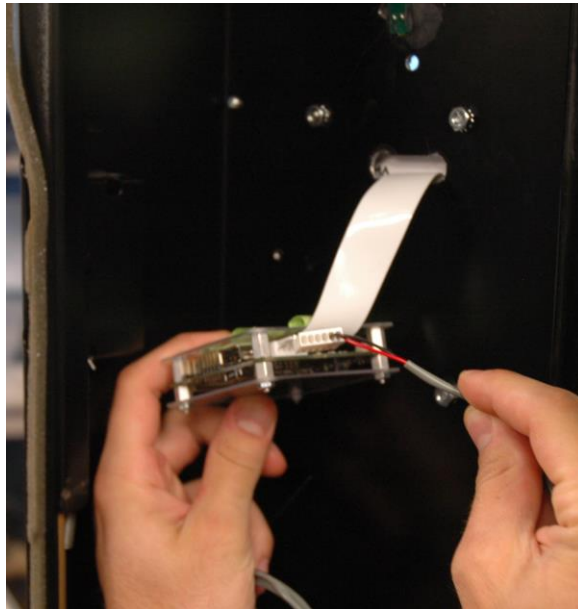


Figure 8.

8) Connect Y-Harness (shown in Figure 9) to existing MDB cable (shown in Figure 10).



Figure 9. Y-Harness

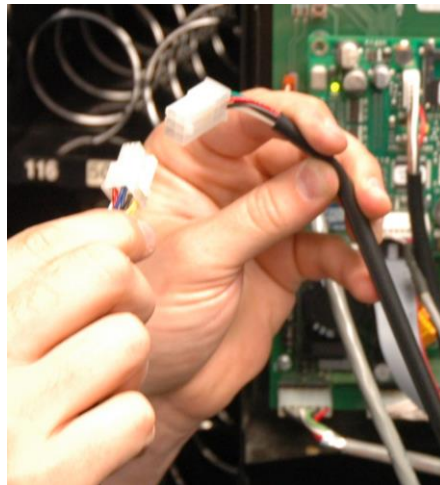


Figure 10. Y-Harness (on left) connection to MDB cable (on right)