



VEL724BEV3KT

Installation instructions for Dixie Narco Bev Max 3 LED Kit

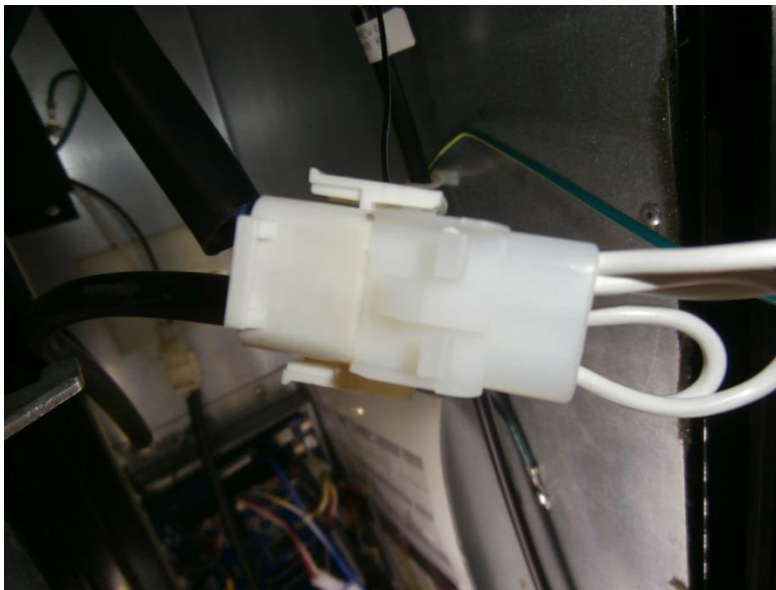
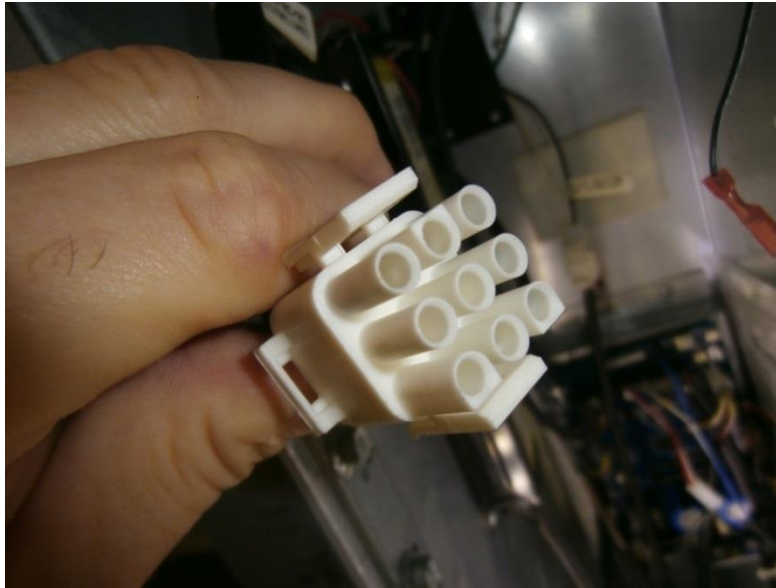
Kit includes the following items:

- (1) Installation Instructions
- (3) LED Light Tubes Part No. VEL724BFD10W
- (1) Jumper Plug Part No. VEL724BEV3

PLEASE NOTE: There are 2 versions of the Bev Max 3, a single ballast version and a double ballast version. This kit will work on both. If you are installing in a single ballast machine, skip step 4.

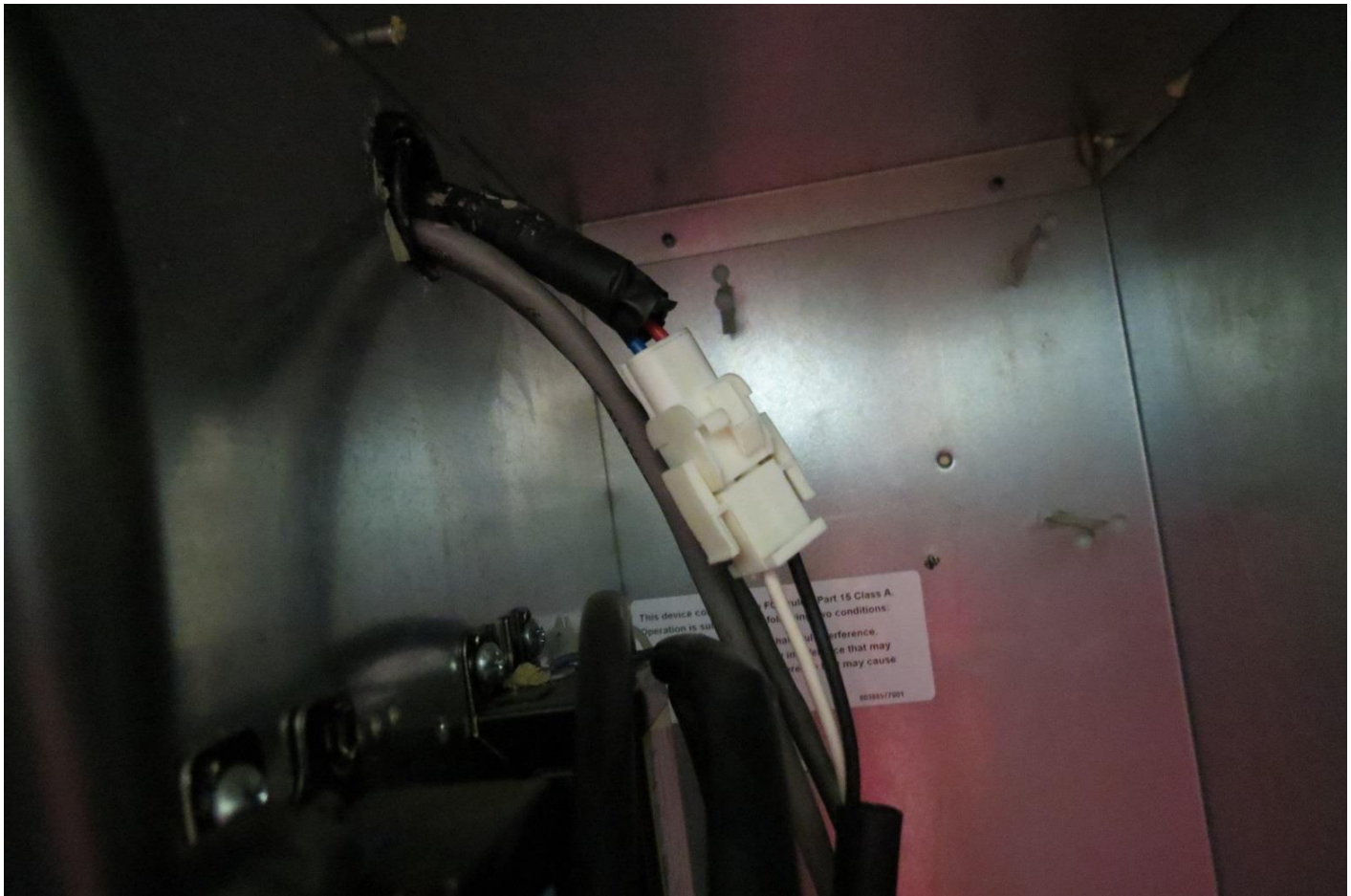


1. Turn power off and unplug the machine.
2. Unplug the front ballast. (on single ballast machines it will be the only ballast.)
3. Plug the provided jumper plug into the machine plug where the ballast was plugged in.





4. Unplug both sides of the back ballast and plug the input harness into the output harness (eliminating the ballast from the circuit).





5. Take out the 3 screws and remove the plastic lens cover on the top side light.
6. Remove the fluorescent bulb.
7. Repeat this procedure on the bottom side light.





8. You will need to rotate the end caps on the LED tubes so that the light is focused in the proper direction. To do this simply pull and turn the end cap. We adjusted ours to -6 (you can adjust it to your personal preference).



9. Install LED tubes in the top and bottom side fixture and replace the plastic light covers.



10. Remove the florescent bulb from the fixture on the top of the machine and replace it with an LED tube.



11. Installation is done, you can now power up the machine.